

BALANCE

Equilibre - Souffle - Moment de grâce

Avec « **Balance** », **Miyoko** défi les lois de l'apesanteur et de l'équilibre. Au sol, quelques « branches », petites, moyennes et grandes. **Miyoko** saisit une plume qu'elle soupèse, puis s'empare d'une branche sur laquelle elle la pose. Puis une autre branche et ainsi de suite. Retenant son souffle comme nous retenons le nôtre. L'édifice « **balance** », doucement, et forme une architecture incroyable à laquelle nos regards sont suspendus. C'est majestueux! Puis, du pied, elle soulève la dernière pièce, la plus grande, qu'elle dresse à la verticale et sur laquelle elle pose son œuvre éphémère, en suspension, au ralenti. L'étrange squelette est stable dans son instabilité aérienne. **Miyoko**, s'éloigne, toise la structure, sourit et soudain, du bout du doigt fait tomber la plume du début et... c'est la chute inévitable. Les pièces de bois rejoignent le sol, là où elles se trouvaient au début. **MAGIQUE!!!**

FLD Production
présente

MIYOKO - BALANCE

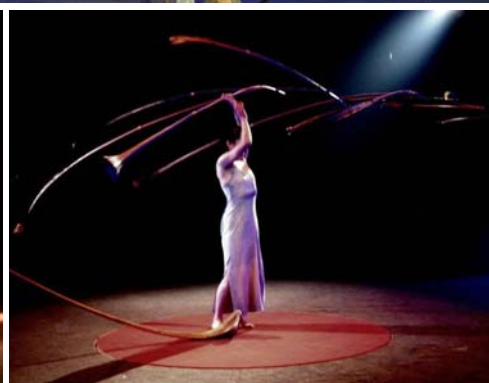


FLD Production

La Synergie des talents pour des événements artistiques de haut niveau - The synergy of talents for high level artistic events
Mobile : +33 608 228 932 - Site web : <http://www.fldproduction.fr> - mail : contact@fldproduction.fr & dancelme@gmail.com

BALANCE

Equilibre - Souffle - Moment de grâce



A prévoir pour chaque prestation :

- Voyages A/R au départ de Paris + frais de visas si nécessaire + fret du matériel.
- Hébergement en single avec petit déjeuner et restauration sur la période,
- Loge avec miroir, table, chaise, portants avec cintres, prise électrique, soft drink, eau, thé, café, gâteaux secs et fruits, un point d'eau et des toilettes à proximité.
- Scène, lumière et sonorisation selon fiche technique qui sera fournie

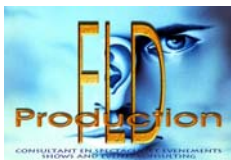


FLD Production
présente

MIYOKO - BALANCE

FLD Production

La Synergie des talents pour des événements artistiques de haut niveau - The synergy of talents for high level artistic events
Mobile : +33 608 228 932 - Site web : <http://www.fldproduction.fr> - mail : contact@fldproduction.fr & dancelme@gmail.com



BALANCE

Equilibre - Souffle - Moment de grâce

Balance Requirements

A Tranquil balance act accumulating fascinating energy, power of meditation and harmony together with elegance et poise. Moments of fragile happiness.

This Act is not only unique but also fragile. For this piece to be successful **there are a number of requirements necessary**. If the requirements are slightly not exact than direct contact to the Artist is a must.

Duration : ca 12 - 15 Min.

Stage : A flat, hard-levelled space. 6 x 6m / 20 x 20ft. Height : 3,5 m. / 14 ft. Covered with dance floor or linoleum

Important : All visitors need to be able to see floor / foot work. Elevation (min : 1 m. / 3 ft.) of stage might become necessary.

Backdrop : As neutral and simple as possible. No blinking.

Projections : No go of projections (neither with the performance nor with other images) in small venues (<400 people). With bigger audiences only upon mutual approval.

Please note : It is possible to do the number on a catwalk also or on smaller stages (2 x 5 m. / 6 x 15 ft.) as long as a space of 6 x 6 m. / 20 x 20 ft. Is guaranteed over the heads of people. Please give us information about your venue!

Attention : **The Act is very sensitive to wind. Each kind of wind or movement of air must be avoided during the performance. Therefore attention must be put on heating system / air control systems, hazer. AC, heating systems, hazers must be closed during performance. During performance, doors must be kept shut.**

All sound and light materials + technicians are provided by organizer.

Light design according to show concept. Minimum light requirements :

2 - 3 profile headlights from behind, preferably as high as possible (in order not to dazzle the audience)

1 ground halogen lamp (min 1000W) with filter dark blue from front edge of the stage to the stage right (seen from audience)

Ca 3 - 4 profile headlights (min 1000 W each) from above or side.

Color gel : dark blue (e.g. LEE 119) / yellow (e.g. LEE 021) / white

Lights shall be steered individually

More information on request.

Sound + Silence : Silence is part of the show

Organizer provides sound system according to the venue

Music by CD or MP3. CD is provided by the artist. Possible to adapt music to your concept or to work with new sounds / live music. Silent moments are part of the show. Please avoid noise by catering, kitchen backstage. No service during performance at dinner shows.

Original artist soundtracks consists of 2 tracks. Important moment for sound technician : Fading out 1st track when all sticks are on artist's head. Moments of silence. 2nd track starts with all sticks on the top of the biggest pole.

Wardrobe : Well equipped INDIVIDUAL wardrobe for 1 artist. Space for warm up. Drinks + small catering.

Catering : please check time slots for meals with artist.

Dressing Room :

Preparation of sticks (not necessarily on stage, somewhere backstage), done by artist before rehearsal starts : ca 1 hour :

Technical set up + rehearsal with technician + artist : ca 1 - 2 hour

- **Light rehearsal** (light must be installed before arrival of artist)

- **Setting of light cues** (please hand a micro to artist to communicate with technician)

- **Sound check**

- **Preparation of palm ribs (with 3 stages hands please)**

- **Announcement and transitions**

- **Full rehearsal** with all crew members (empty stage, dimmed light, quiet atmosphere, no wind or AC) : ca 15 min

Time planning : Time planning of transfers, rehearsal and show shall be communicated and agreed upon before arrival.

At moment of show : Showtime postponement (more than 10 minutes) must be announced latest 20 minutes in advance.

Artist needs 30 minutes of concentration exercises directly before show.

Moments of show :

Preparation on stage with 3 stage hands ca 2 - 3 minutes

Balance act : ca 12 - 13 minutes

Get out : with 3 stage hands ca 1 minute

= **all in all** ca 15 - 16 minutes

Get out of wardrobe after show : ca 1 hours packing of sticks

Local Transfers / Transport of props : Miyoko is travelling by train / plane. All local transfers between long distance train station / airport / hotel and venue must be organized by promoter. Set of props consists of bag ca 1,8m x 0,45m x 0,4m / 5,6 ft length / 1,5 ft diameter, weight of ca 23 kg (European flight) or 28 kg Intercontinental flights and European travels longer than 1 week), 1 trolley + some hand-luggage. She need support carrying the luggage from the moment she arrives at airport / station

Before arrival : please give us contacts to producer, driver, technicians (names + mobile phone numbers)

Special requirement : During all stay, Miyoko kindly asks for a translator / production assistant who is at her disposal for translation of technical issues, who supports with media / journalists (in due cause) and accompanies her between hotel / venue. This assistant shall be fluent in Japanese or English - also in technical vocabulary - and should have some first experiences in production of events.

The artist is allowed to invite up 2 guests who will also have access to backstage. Sometimes Miyoko is accompanied by an assistant, in these cases : 2 flights, 2 seats in transfer car, 2 hotel rooms, catering for 2.

FLD Production

La Synergie des talents pour des événements artistiques de haut niveau - The synergy of talents for high level artistic events

Mobile : +33 608 228 932 - Site web : <http://www.fldproduction.fr> - mail : contact@fldproduction.fr & dancelme@gmail.com